

# LanSafe

## Network Shutdown Solution

### Benefits

- Preserves data-integrity system wide: sequential shutdown of all computers protected by a single UPS
- System-wide control and configuration via cross-platform functionality
- Networked UPSs can be tested and managed from one node
- Automatic email alert on UPS status
- Configure actions for power events
- Power conditions can be analysed with voltage logging
- Scheduled on/off times enable power conservation
- Load segment control adds flexibility to power management
- Reduces cost per device for power protection with UPS groups
- USB support
- Available free of charge for use with Invensys Powerware UPSs
  - PW3110
  - PW5115
  - PW5125
  - PW9120
  - PW9125
  - PW9150
  - PW9170+
  - PW9305
  - PW9340



### Product Snapshot

<b>Type:</b>	Network shutdown software
<b>Operating Systems:</b>	Currently supports up to 20 operating systems
<b>Upgrades:</b>	Upgrades available at <a href="http://www.emea.powerware.com">www.emea.powerware.com</a>

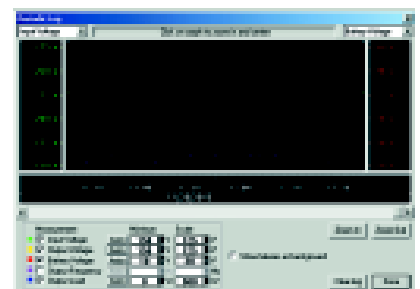
If all computer and network equipment are connected to a Invensys Powerware UPS running LanSafe software, there is no need to worry about power disturbances and outages. The user will escape all the unpleasant consequences the less wary are likely to encounter: lost orders, lost records, corrupted files, and, in all likelihood, corrupted databases.

In the case of a power outage, LanSafe automatically initiates a complete, orderly shutdown, saving all work-in-progress on all the workstations. While traditional shutdown software communicates only with the system directly connected to the UPS, LanSafe performs a system-wide shutdown process on all protected computers.

Programmable to first shut down individual workstations, LanSafe saves all work-in-progress allowing sufficient time for critical data to flow to the server. The most critical equipment, including the database or file

servers, are shut down last, after all work-in-progress has been saved from workstations through hubs, switches, routers, and communication servers. The correct shutdown sequence may save your company substantial amounts of money.

Power events can be configured to trigger a variety of actions including SMTP email sending, command execution, and message broadcasts. Messages can be translated and customised to meet user needs.

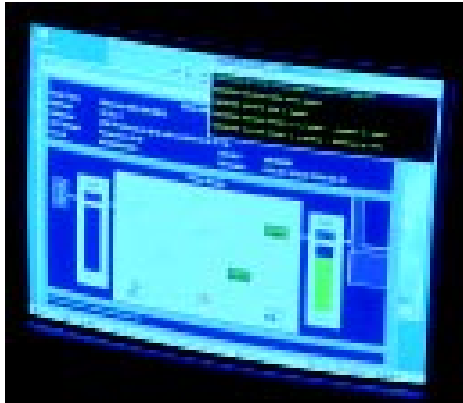


# LanSafe

## Network Shutdown Solution

### Network Shutdown

Several network devices can be connected to a single UPS, with sequential shutdown provided for every device in that group. No matter what the operating system is, all running LanSafe nodes communicate via their common protocol (TCP/IP, NetBios or IPX/SPX). Complete shutdown of a group of networked computers\* is provided with only one serial connection to the UPS.



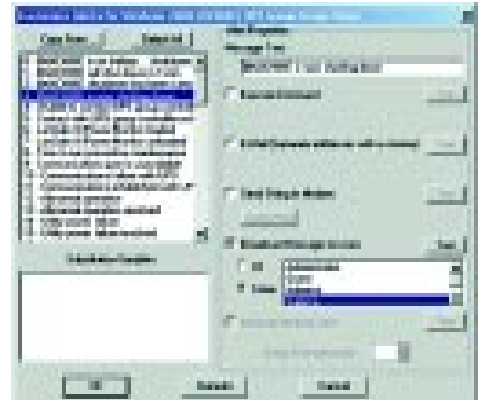
\*) The maximum number of computers that can be shutdown within one UPS Group is 64, operating in a 80% network traffic load

### Supported Operating Systems

- Windows 9x/Me/NT4/2000/XP
- Windows NT 3.5x-4.0 (Alpha processor)
- Novell NetWare 4.11, 5.0, 5.1, 6.0
- IBM OS/2 v2.0-4.0 (LS 4.12)
- Compaq Tru64 4.x, 5.x (Alpha processor)
- HP-UX 9.07-10.20, 11.0, 11.11
- IBM AIX 3.x, 4.x, 5.x (RISC or PowerPC processor)
- Sun Solaris 2.x, SunOS 5.x, 7, 8 (SPARC processor)
- Sun Solaris 2.6/SunOS 5.6, 7, 8 (Intel processor)
- AT&T SVR4 v3.0
- Data General UNIX R4.2MU01 or above (Intel processor)
- DEC Digital UNIX 4.x (Alpha processor)
- Linux with kernel 2.x.x
- SCO UNIX OpenServer 3.x, 5.x
- SGI IRIX 6.5 (MIPS processor)
- UnixWare 2.x and 7.x (RS 232-enabled UPS models)

### Customisable alerts

LanSafe ensures that nobody is left in the dark when a power disturbance occurs. With power loss warnings users receive instantaneous information on adverse power conditions. Personalised alert messages allow users to customise message text (in any language) and determine a user list to receive alerts, while the software's remote notification capabilities ensure that users in remote locations stay informed of power conditions.



TCP/IP networking is supported for all operating systems and therefore strongly recommended. NetBIOS networking may be used on Windows platforms and IPX on Novell NetWare.

Invensys Powerware offers UPS solutions including power management software and services ranging from 300VA to 625kVA, catering for the small office to the large data center.

*Specifications subject to change without notice.*